

# Bus Rapid Transit (BRT)






## Rapid Transit Corridor Study



BRT is a versatile transit solution that can be implemented in phases.

### Map Legend

-  Proposed BRT Route
-  Potential Station Locations
-  Landmark Locations

### Corridor Landmarks

- |   |  |
|---|--|
| <b>1</b> ProMedica Health and Wellness Center                       | <b>10</b> Islamic Food Bank of Toledo<br>Cherry Street Ministries                      |
| <b>2</b> The Ability Center   | <b>11</b> Fifth Third Field  |
| <b>3</b> Franklin Park Mall   | <b>12</b> Owens Corning World Headquarters<br>Huntington Center<br>Imagination Station |
| <b>4</b> Kroger   | <b>13</b> Glass City Riverwalk<br>Great Lakes Museum                                   |
| <b>5</b> ProMedica Toledo Hospital<br>ProMedica Children's Hospital | <b>14</b> Historic East Toledo Business District                                       |
| <b>6</b> Ottawa Park  | <b>15</b> Mercy St. Charles Hospital   |
| <b>7</b> Monroe Street Neighborhood Center<br>Jermain Park          | <b>16</b> Oregon Town Center   |
| <b>8</b> Toledo Museum of Art                                       | <b>17</b> Walmart  |
| <b>9</b> Downtown Toledo  |  |





Early conceptual station design



Riverfront



Toledo Museum of Art



Fifth Third Field

## Project Timeline

### What's Happening Now

2025-2026

✓ Rapid Transit Corridor Study

2026

✓ Locally Preferred Alternative (LPA) adopted in Regional Transportation Plan (RTP)

### What's Coming Next

2026-2031

✓ Safety improvements on Monroe Street through Safe Streets for All (SS4A) program

2026-2028

✓ BRT 30% Design Phase



### Looking Ahead

This project is part of a broader, long-term vision for a more connected transit system. Future planning will consider additional corridors and opportunities to expand access across the Toledo area.

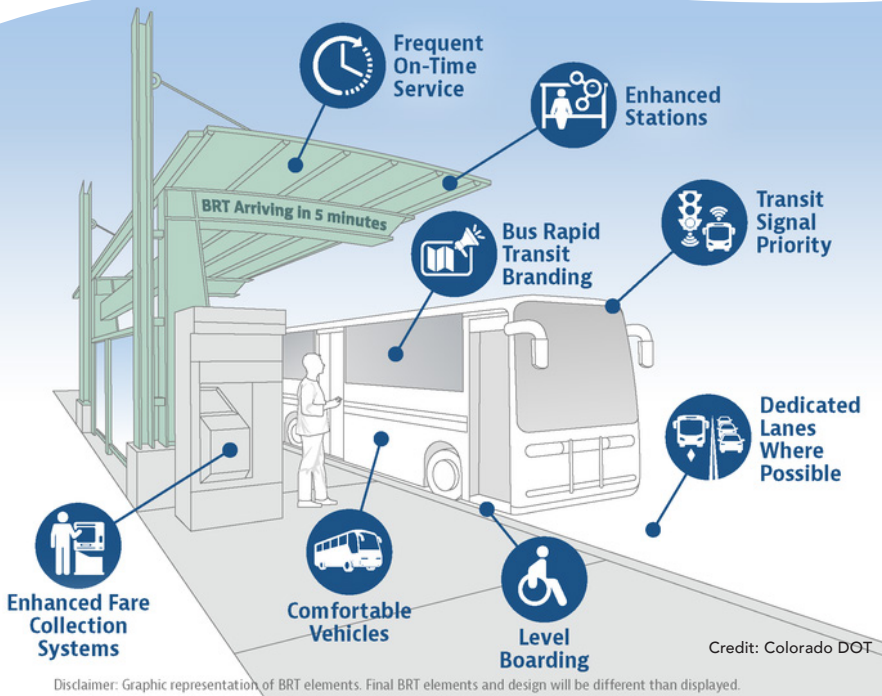


You can learn more here:  
**TARTA.com/BRT**



# Bus Rapid Transit (BRT)

## Rapid Transit Corridor Study



## What is Rapid Transit?

### Toledo Area

A high-quality transit system that will make it easier to get to work, healthcare and daily destinations.

Rapid transit is designed to make getting around Toledo easier, more reliable and more convenient.

Dedicated bus lanes, more frequent service and other upgrades will get people where they need to go in a smoother overall experience.

## Components of BRT

- Running Ways:** Dedicated lanes or busways with frequent, reliable, faster service.
- Stations:** Enhanced waiting environments with level boarding at multiple doors, simplified fare payment and real-time arrival info.
- Vehicles:** Modern, easily branded buses.
- Fare Collection:** Smart card/ticket machines at stations.
- ITS Technology:** Intelligent Transportation Systems for tracking real time arrival and traffic signal priority.

## Benefits of BRT

- Lower Costs:** Significantly cheaper to implement than rail systems.
- Faster Commutes:** Travel times can be 25-30% faster than traditional buses in some cities.
- Reliability:** Dedicated lanes and signal priority minimize congestion-related delays.
- Accessibility:** Level boarding makes it easier for passengers with strollers, wheelchairs or bikes.

